



**Middle Atlantic Products, Inc.**  
an ISO 9001:2000 Registered Company

Uncontrolled on Paper

**Title:** Middle Atlantic Products introduces CAD Blocks

**PRODUCT SERIES:** CAD Blocks

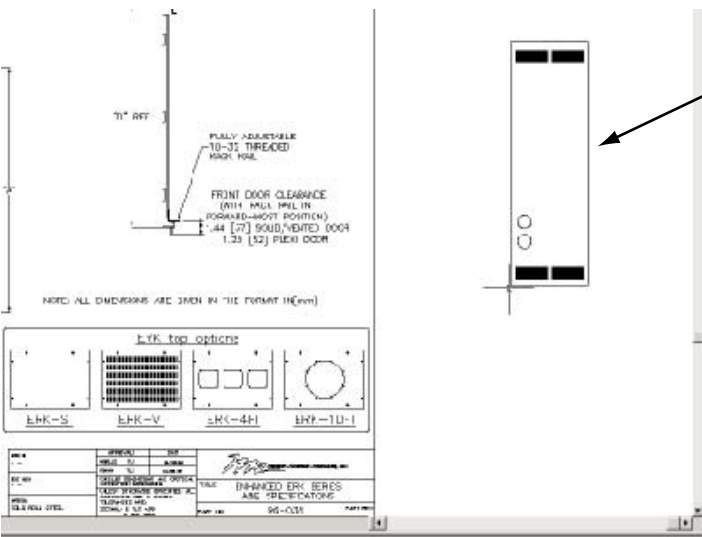
**SPECIFIC MODELS:** ERK, MRK, WRK, WRK-SA, VRK, VMRK

**PURPOSE:** Finding, understanding and using Middle Atlantic Products CAD Blocks

CAD Blocks represent the easiest way to lay out a system in AutoCAD®, by cutting and pasting 1:1 scale drawings of a desired rack or enclosure.

CAD Blocks are embedded within select Middle Atlantic Products CAD A&E drawings, the first of which shipped with the 2006 Master Catalog and appear on the accompanying CD.

The CAD Blocks User's Guide has been recreated within this bulletin and is available on the CD in the CAD Drawings section. The User's Guide provides illustrated step-by-step instructions for inserting a CAD Block into the A&E and then pasting it into an Auto CAD® layout.



ERK-1820 CAD Block

Users can paste these Blocks into their AutoCAD® layouts at 1:1 scale.

Blocks are available for ERK, MRK, WRK, WRK-SA, VRK and VMRK Series racks and enclosures. More products will be CAD Blocks enabled during the summer of 2006, including Security Consoles; LCD Desks; WR, SCRK and SCQRK enclosures and the SR wall racks.

an ISO 9001:2000 Registered Company

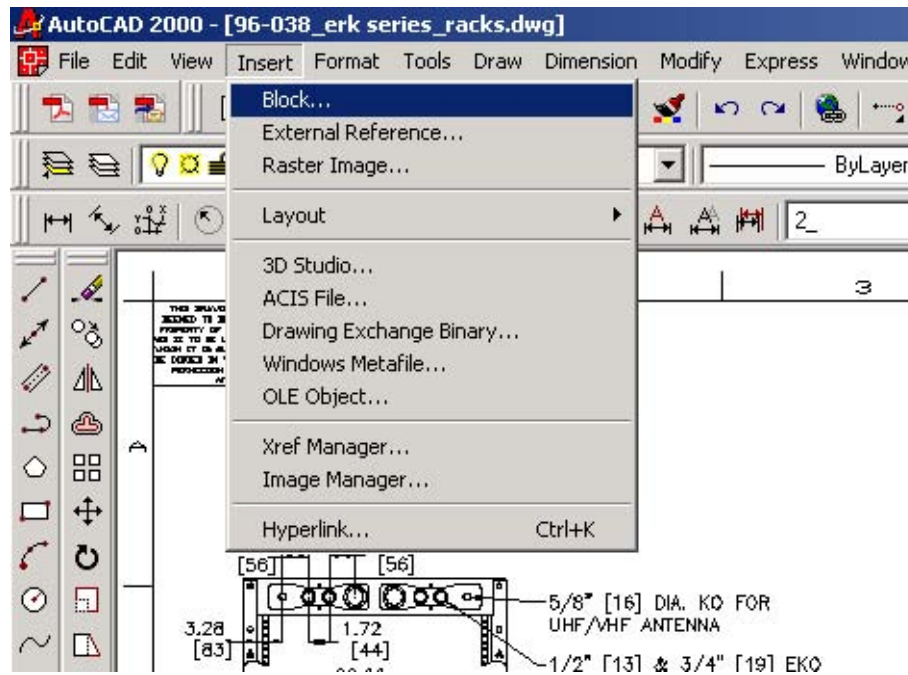


## Middle Atlantic Products, Inc.

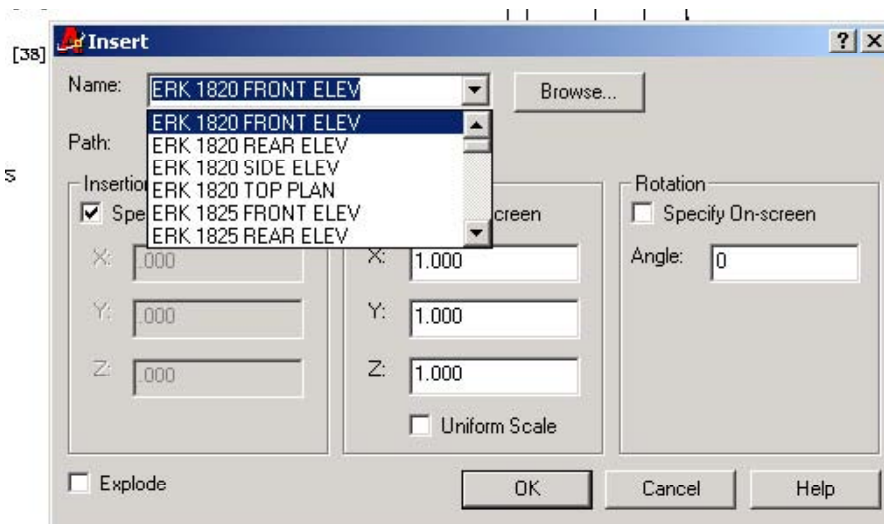
an ISO 9001:2000 Registered Company

**Lay out a system in AutoCAD® with CAD Blocks!**  
Available for select racks and enclosures (ERK, MRK, WRK, WRK-SA, VRK, VMRK)

Open desired CAD A&E file and select Insert | Block from the menu



Select desired enclosure and view



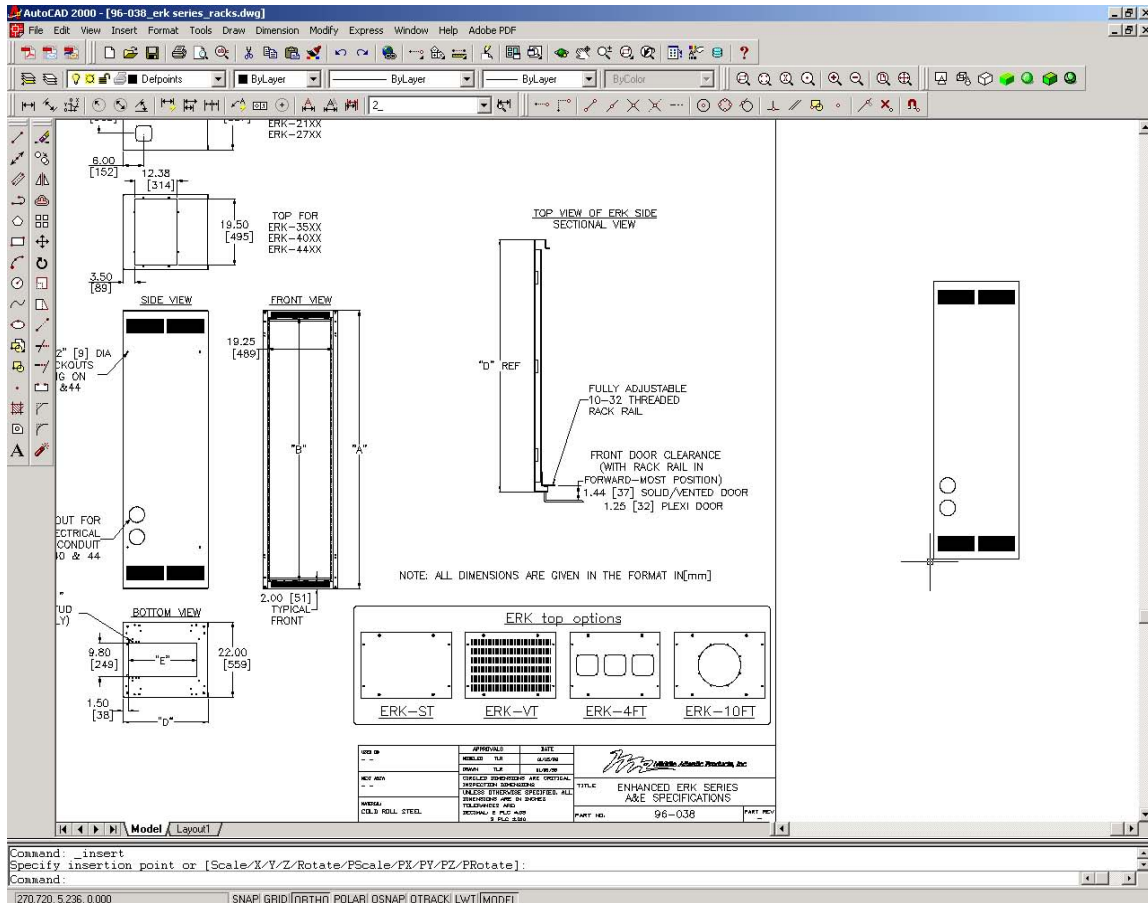


## Middle Atlantic Products, Inc.

an ISO 9001:2000 Registered Company

Drop the desired Blocks into the drawing

Cut and paste Blocks into separate layout drawing and close the CAD A&E file



**NOTE: Blocks are exported at 1:1 scale**